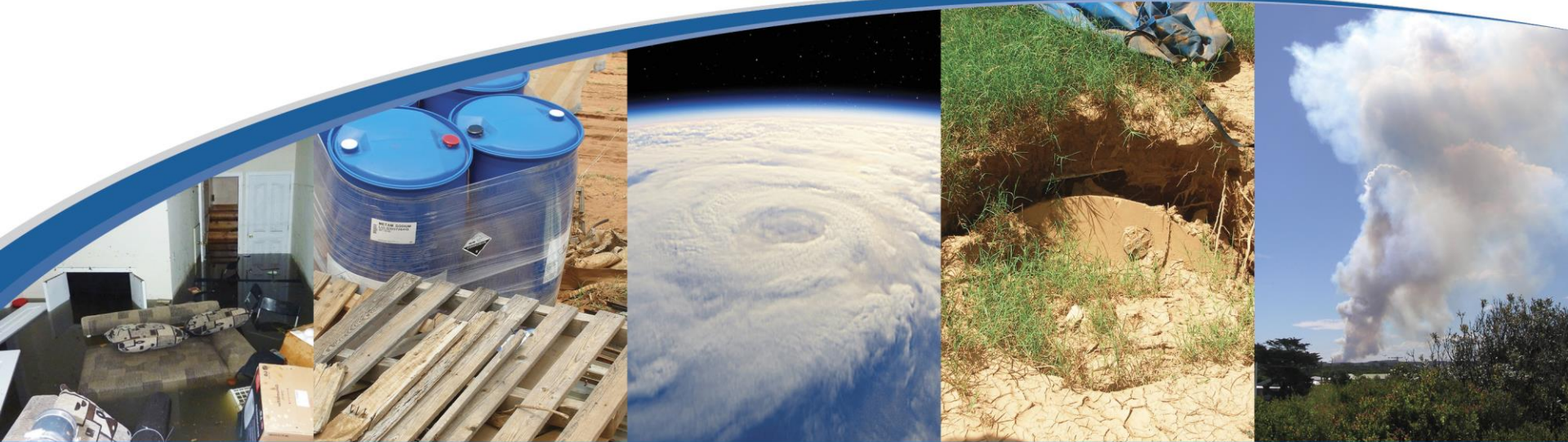




Government of **Western Australia**
Department of **Health**
Environmental Health

Emergency Management Arrangements in Western Australia



Emergency Management Arrangements (Overview)



Enabling legislations and EM Arrangements



Terminologies used during emergency incidents



Public Health emergencies provision under Public Health Act 2016

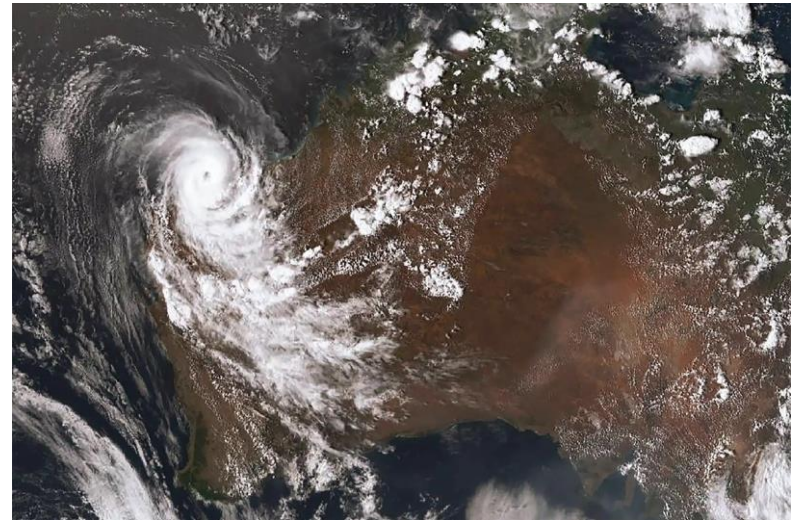
What is an emergency?

- EM Act states:

“the occurrence or imminent occurrence of (specific prescribed) hazards, which is of such a nature or magnitude that it requires a significant and coordinated response”.

Hazards:

- natural and human caused events



What is Incident ?



An incident means the occurrence or imminent occurrence of a hazard.



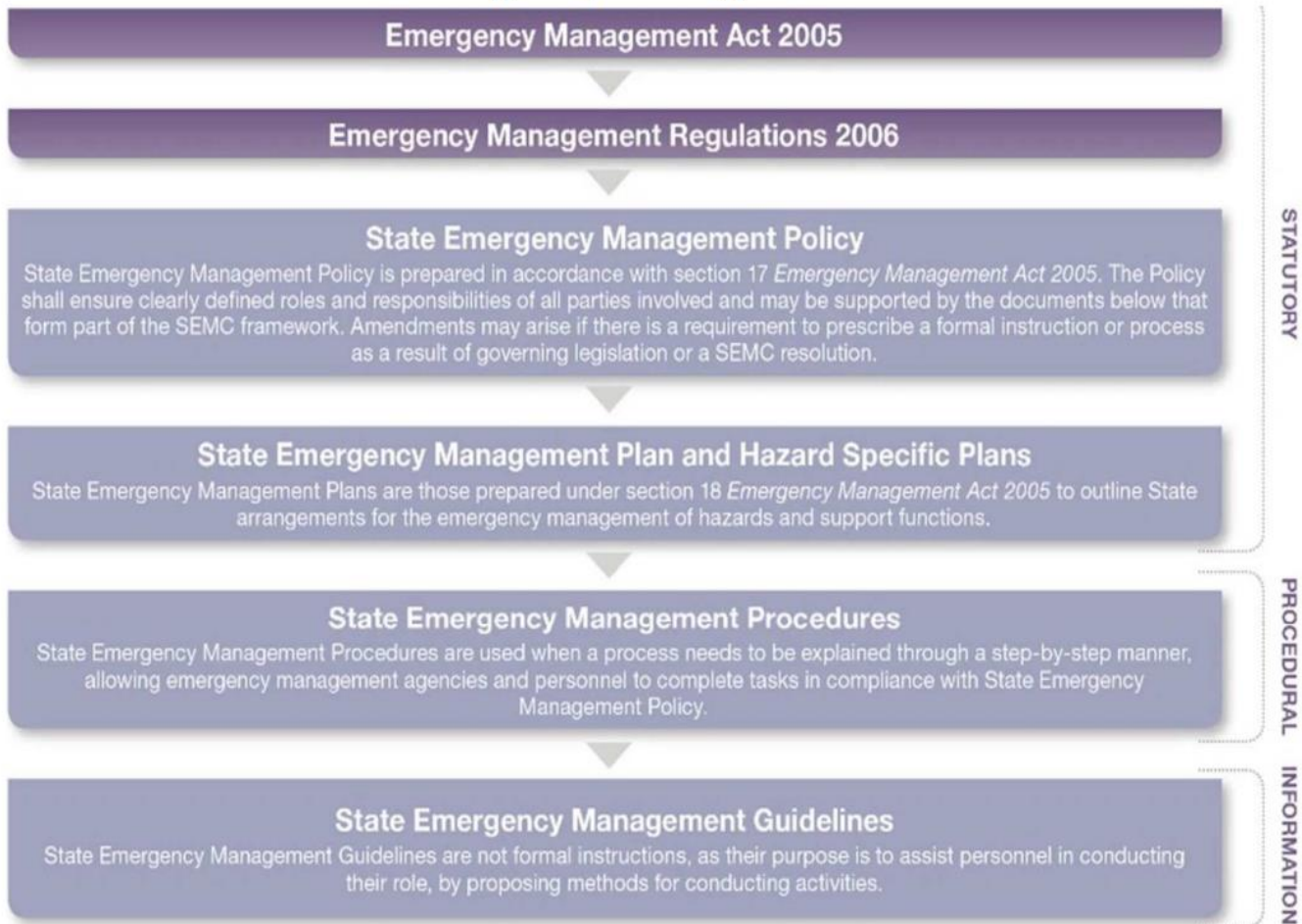
If it escalates to such a nature/magnitude that it requires a significant and coordinated response, then EM arrangements may be required, to coordinate and manage the multi-agency response to the emergency

Emergency Management



- Each State and Territory has its own emergency management legislation
- In Western Australia:
 - Emergency Management Act 2005 (EM Act)
 - Emergency Management Regulations 2006 (EM Regulations)
 - Other legislation include: Public Health Act 2016

State Emergency Management Framework



Emergency Management Act 2005 (EM Act)

- Prompt and coordinated organisation of emergency management in WA.
- Roles and responsibilities at a state, district and local level in relation to:



WA Emergency Management Arrangements EM Act



State
arrangements



District
arrangements



Local
arrangements

EM Act: State arrangements

State Emergency Management Committee (SEMC)

- Appointed by Minister of Emergency Services
- [Standing committee](#) that provides strategic advice to the Minister for Emergency Services
- 11 members, including Chief Health Officer (Dr Andy Robertson) and the CEO of WALGA, LG representatives, etc.
- Plays key role in reviewing EM policy, plans, procedures and guidelines.



Hon Stephen Dawson MLC

SEMC

STATE EMERGENCY
MANAGEMENT COMMITTEE

EM Act: District arrangements

Emergency Management Districts (EMD)

11 EMDs

```
graph TD; A[11 EMDs] --> B[Each has its own District Emergency Management Committee (DEMC).]; B --> C[The DEMCs]; C --> D[Establish and maintain effective emergency arrangements in their district.]; C --> E[Focus on risk in their districts]; C --> F[Guide and support Local Emergency Management Committees (LEMCs)];
```

Each has its own District Emergency Management Committee (DEMC).

The DEMCs

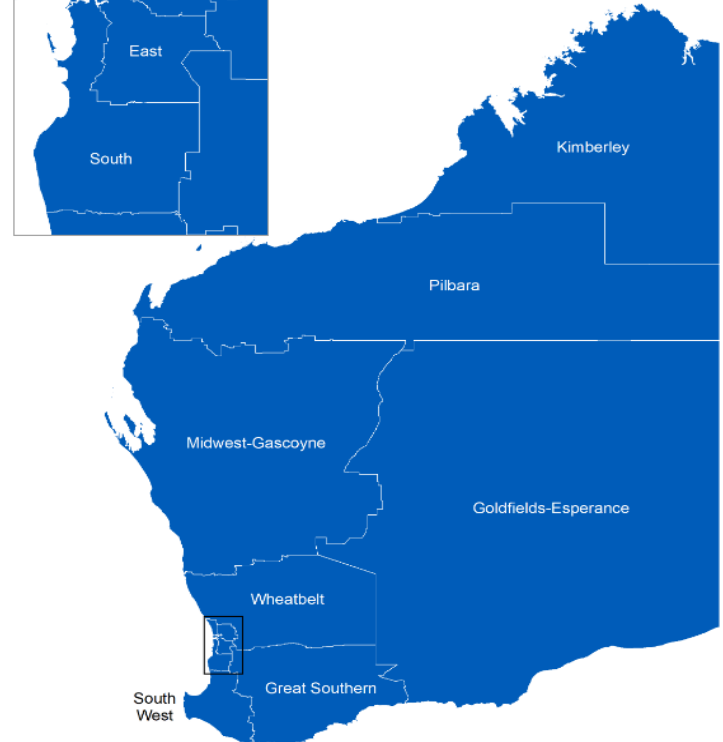
Establish and maintain effective emergency arrangements in their district.

Focus on risk in their districts

Guide and support Local Emergency Management Committees (LEMCs)



Metropolitan EM Districts



EM Act: District arrangements

Emergency Management Districts (EMD)

- 7 in WA's regions
- 4 in Perth metropolitan area.

EM Act: Local arrangements

Local Emergency Management Arrangements (LEMA)

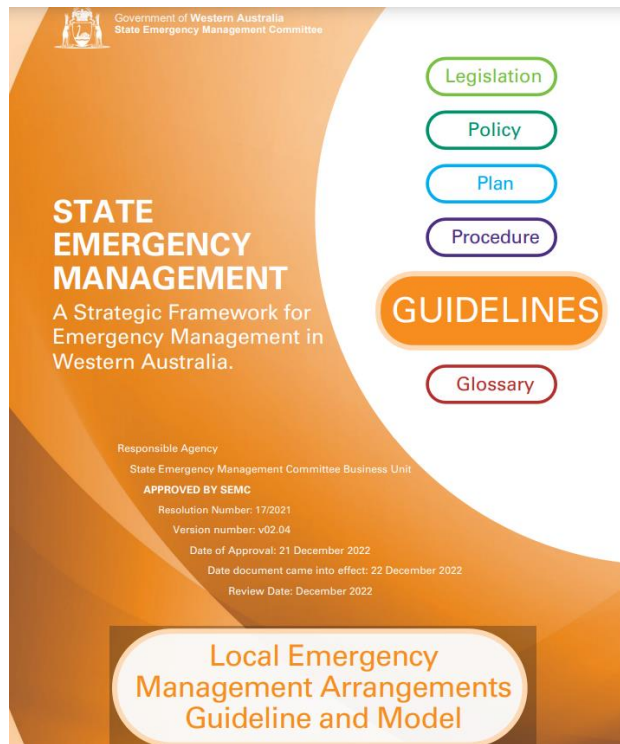
Required by EM Act Section 36

LG's Collection of EM strategies, plans, agreements.

LG's responsible for developing, maintaining, and testing their LEMA.

Effective LEMA = community's resilience and readiness for emergencies.

LEMA Guideline and model (Review)



EM Act: Local arrangements

Local Emergency Management Committee (LEMC)

- LEMC Handbook
- Summary - key roles, and responsibilities, and best practice advice for the administration of LEMC.
- Standardised approach to the administration of LEMCs across WA.



Hazard Management Agencies WA (EM Regulations)

Commissioner of Police

FES Commissioner

Agriculture Director General

Public Transport Authority

ARC Infrastructure Pty Ltd

CEO Health Department

CEO Transport Department

Coordinator of Energy

Prescribed Hazards (EM Regulations)

Hazard

- 1 Road Crash
- 2 Air Crash
- 3 Terrorist Act
- 4 Land Search
- 5 Marine Search
- 6 Radiation Escape (Nuclear Powered Warships)
- 7 Space Re-Entry Debris (SPRED)
- 8 Collapse (Structural)
- 9 Cyclone
- 10 Earthquake
- 11 Flood
- 12 Storm
- 13 Tsunami
- 14 Fire

Hazard

- 15 HAZMAT - Chemical
- 16 HAZMAT - Radiological
- 17 HAZMAT - Biological
- 18 Heatwave
- 19 Human Epidemic
- 20 Marine Transport Emergency
- 21 Marine Oil Pollution
- 22 Gas Supply Disruption
- 23 Liquid Fuel Supply Disruption
- 24 Electricity Supply Disruptior
- 25 Animal and Plant Biosecurity
- 26 Rail Crash (PTA Network)
- 27 Rail Crash (Brookfield Rail Network)

Combat Agencies & Support Organisations

Prescribed in EM Regulations

Public Authorities

Undertake tasks, at the request of Controlling Agency/HMA.

Specialised knowledge, expertise or resources to perform that EM activity

Support Organisation – Department of Communities

- Support HMA and Combat Agencies

Combat agencies

Department of Health

St John Ambulance Western Australia Ltd. (SJA)

Western Australia Police Force (WA Police Force)

Department of Biodiversity,
Conservation and Attractions
(DBCA)

Department of Fire and Emergency Services (DFES)

Local governments

Support organisations

e.g. Department of
Communities

Controlling Agency



Controls the response activities to a specified type of emergency.



Responsibility :

Legislation other than EM Act
By agreement with HMA and one or more agencies
Specified in State Hazard Plans

HMA vs Controlling Agency

Hazard	Hazard Management Agency	Controlling Agency
Biological Hazards (e.g. anthrax)	CEO, Department of Health	Department of Health
Heatwave	CEO, Department of Health	Department of Health
Human Epidemic	CEO, Department of Health	Department of Health
Fire	Fire and Emergency Services Commissioner	DFES /DBCA /Local government - depending on location of fire

PUBLIC HEALTH
ACT 2016
Part 12 - Public
health
emergencies

- Provides the Minister with the power to declare a public health state of emergency and to authorise the exercise of emergency powers.

PUBLIC HEALTH ACT 2016

Part 12 – Public Health Emergencies

During a state of emergency, EM Act is activated - a whole of government response

Uniquely health related emergencies may not require a whole of government response

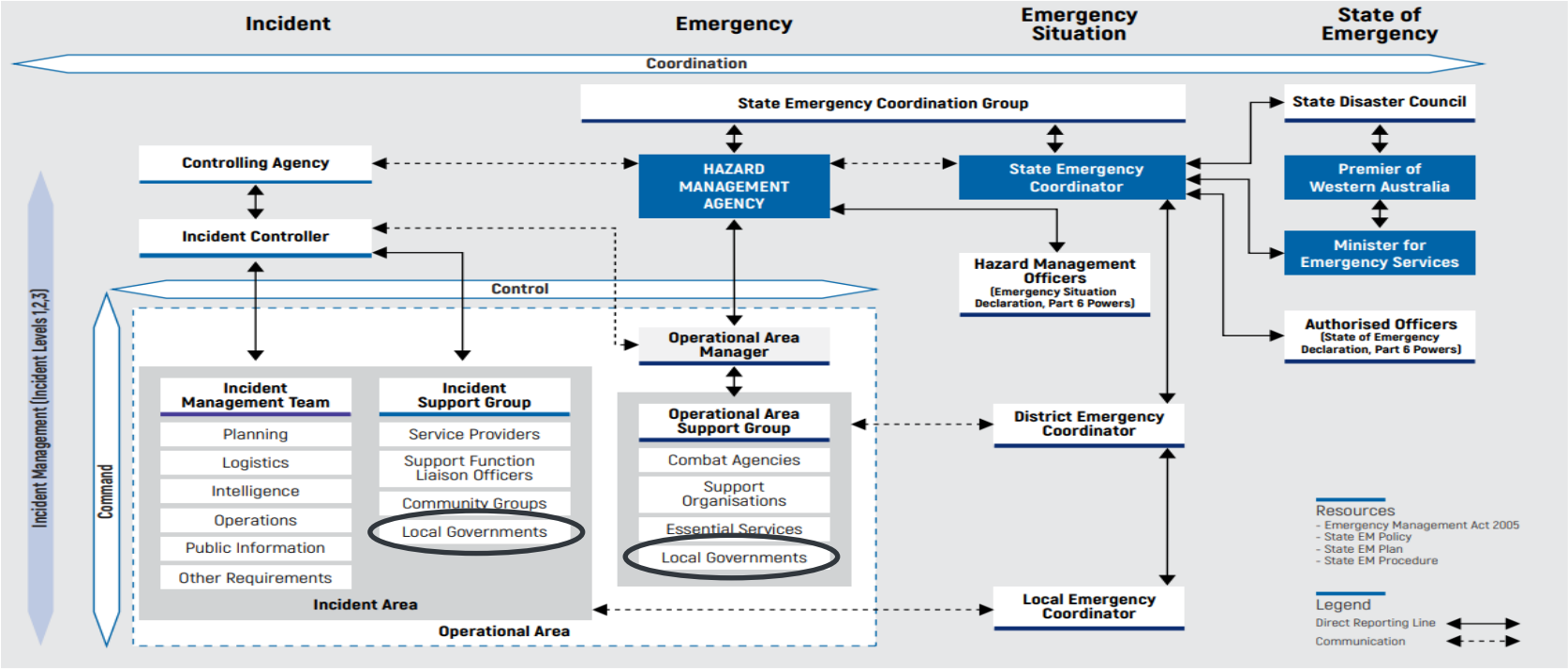
Part 12 complements the State EM powers by providing detailed provisions in relation to drugs, vaccines, quarantine and other medical matters.

Effective planning and response to public health emergencies : Ebola issue, /food or water contamination following a natural disaster.

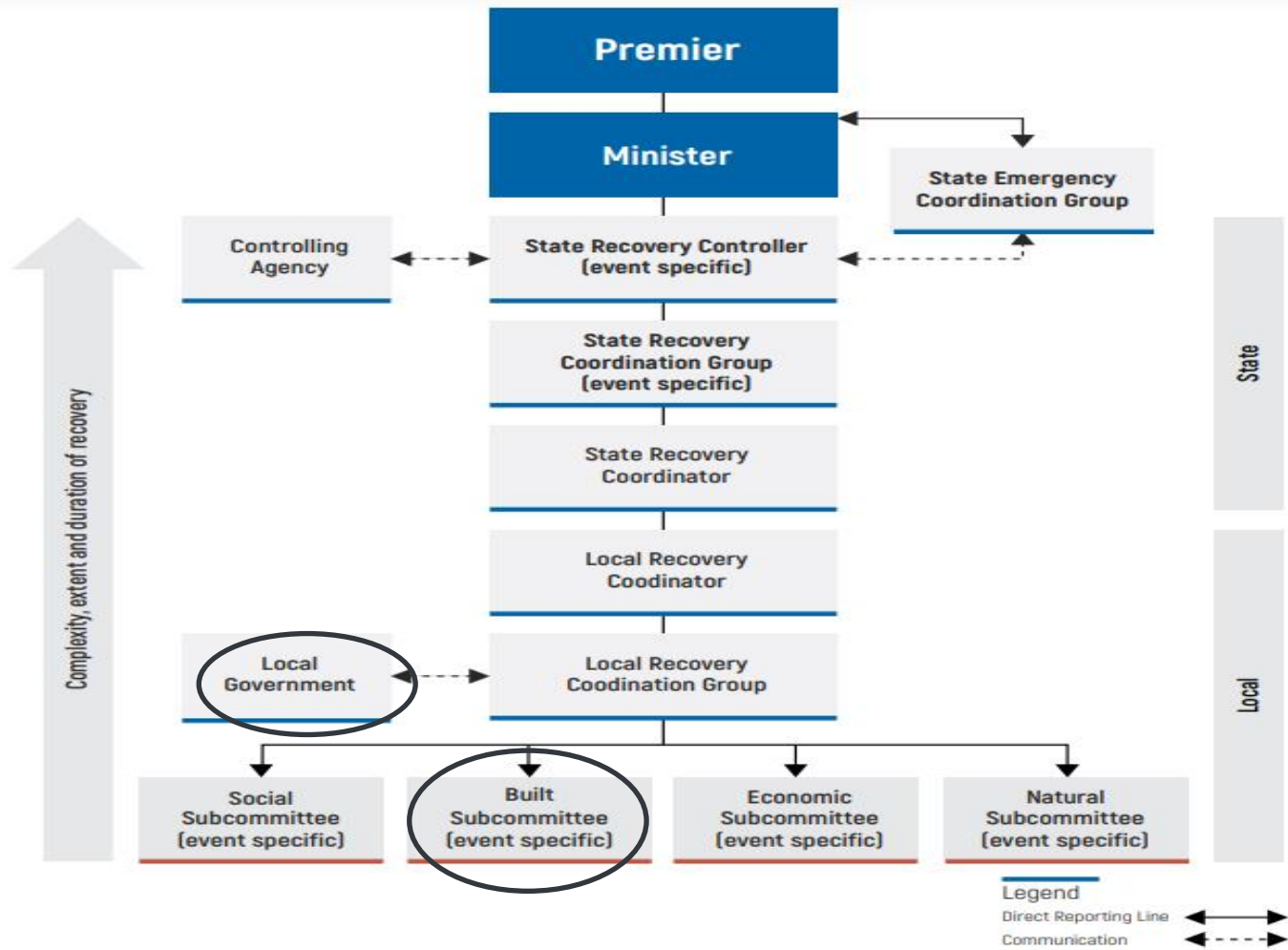
Prevention/Preparedness

- State EM Policy, Plans, Procedures and Guidelines
- State Hazard Plans
- LEMA
- Exercise
- Review

Response

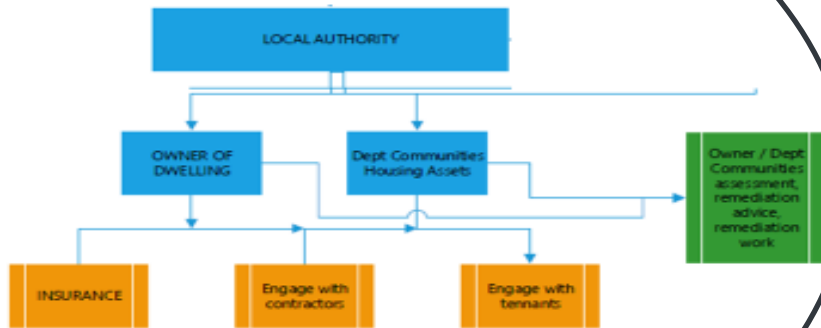


Recovery



Built subcommittee

- EHD provides public information via HealthyWA in concert with the Hazard Management Agency.
- LG EHO assessment for EH Hazard Risk
 - DOH EHD support to LG EHO as required
- Other agencies as per their roles and responsibilities in State Hazard Plan & State Emergency Management Plan (P94, Appendix; Chief Executive Officer, Department of Health)



Reference

- [Emergency Act 2005](#)
- [Emergency Act Regulations 2006](#)
- [Public Health Act 2016](#)
- [State Emergency Management Framework](#)