



COVID-19 Weekly Surveillance Report

Table of Contents

| | |
|--|-----------|
| Summary for the week 14 November to 20 November 2022 (inclusive) | 2 |
| Hospitalisations, intensive care unit inpatients and deaths | 3 |
| Figure 1. Number of active and cleared COVID-19 cases currently in hospital and intensive care unit, and cumulative number of COVID-19 notifications by notification date, 01 January to 20 November 2022..... | 3 |
| Table 1. Number of COVID-19 related deaths by vaccination status and age group, 14 November to 20 November 2022 and 01 January to 20 November 2022..... | 4 |
| Case data | 5 |
| Figure 2. COVID-19 cases by notification date and test type, Western Australia, 01 January to 20 November 2022..... | 5 |
| Figure 3. COVID-19 cases by age group and sex, Western Australia, 14 November to 20 November 2022. | 6 |
| Table 2. COVID-19 reinfections in Western Australia, 02 March to 20 November 2022..... | 7 |
| Figure 4. 7-day moving average of COVID-19 cases per 100,000 population by Australian jurisdiction, 01 December 2021 to 15 November 2022..... | 7 |
| Figure 5. 7-day moving average of COVID-19 cases per 100,000 by age group, Western Australia, 08 February to 20 November 2022..... | 8 |
| Figure 6. 7-day moving average of COVID-19 cases per 100,000 population by health region, Western Australia, 08 February 2022 to 20 November 2022. | 9 |
| Table 3. Number of COVID-19 cases and case rates per 100,000 population by region, 14 November to 20 November 2022 and 07 November to 13 November 2022..... | 10 |
| Figure 7 (a). Locally acquired COVID-19 weekly case rates per 100,000 population by LGA, regional Western Australia, 14 November to 20 November 2022..... | 11 |
| (b) Locally acquired COVID-19 weekly case rates per 100,000 population by LGA, Perth metropolitan area, 14 November to 20 November 2022..... | 11 |
| Aboriginal case summary | 12 |
| Figure 8. COVID-19 cases in Western Australia per 100,000 population and rate ratio by Indigenous status and notification date, 08 February to 20 November 2022..... | 12 |
| Testing data | 13 |
| Figure 9. The number of COVID-19 polymerase chain reaction tests and proportion positive by laboratory category and specimen date, 01 December 2021 to 20 November 2022..... | 13 |
| Appendix 1 | 14 |
| Regional cases by postcode, 14 November – 20 November 2022..... | 14 |

Summary for the week 14 November to 20 November 2022 (inclusive)

In the week of 14 November to 20 November 2022 there were:

- 9,490 COVID-19 cases reported
 - 1,709 with positive polymerase chain reaction (PCR) tests
 - 7,781 with positive rapid antigen tests (RAT)
 - 1,481 were reinfections (see definition in Table 2)
- 75 new hospital admissions and 1 new admission directly into an intensive care unit
- 14 deaths reported, aged between 75 and 99 years old
- 9,901 COVID-19 PCR tests conducted

Surveillance summary

There was a 11% increase in **PCR tests** conducted in the current reporting week compared to the previous reporting week, with a 7-day average proportion of positive PCR tests of 19.2%.

Overall, **case numbers** increased by 13% compared to the previous week. Cases diagnosed by PCR increased by 5% and by RAT increased by 15%. **Reinfections** comprised 16% of total cases this week, compared with 13% last week.

The moving seven-day average **case rates** per 100,000 population increased across all public health regions except the Kimberley and Midwest regions. The seven-day average case rate for the Perth metropolitan area (54 cases/100,000 population) is tracking approximately 54% higher than Western Australia Country Health Service (WACHS) regions combined (35 cases/100,000 population).

The highest seven-day average **case rates** were in the 50 - 69 years age group (66 cases/100,000 population), with the lowest rates in the 0 – 9 years age group (21 cases/100,000 population). Nationally, the moving seven-day average case rates increased across all jurisdictions, with South Australia having the highest rate (65 cases/100,000 population) and Northern Territory the lowest rate (19 cases/100,000 population).

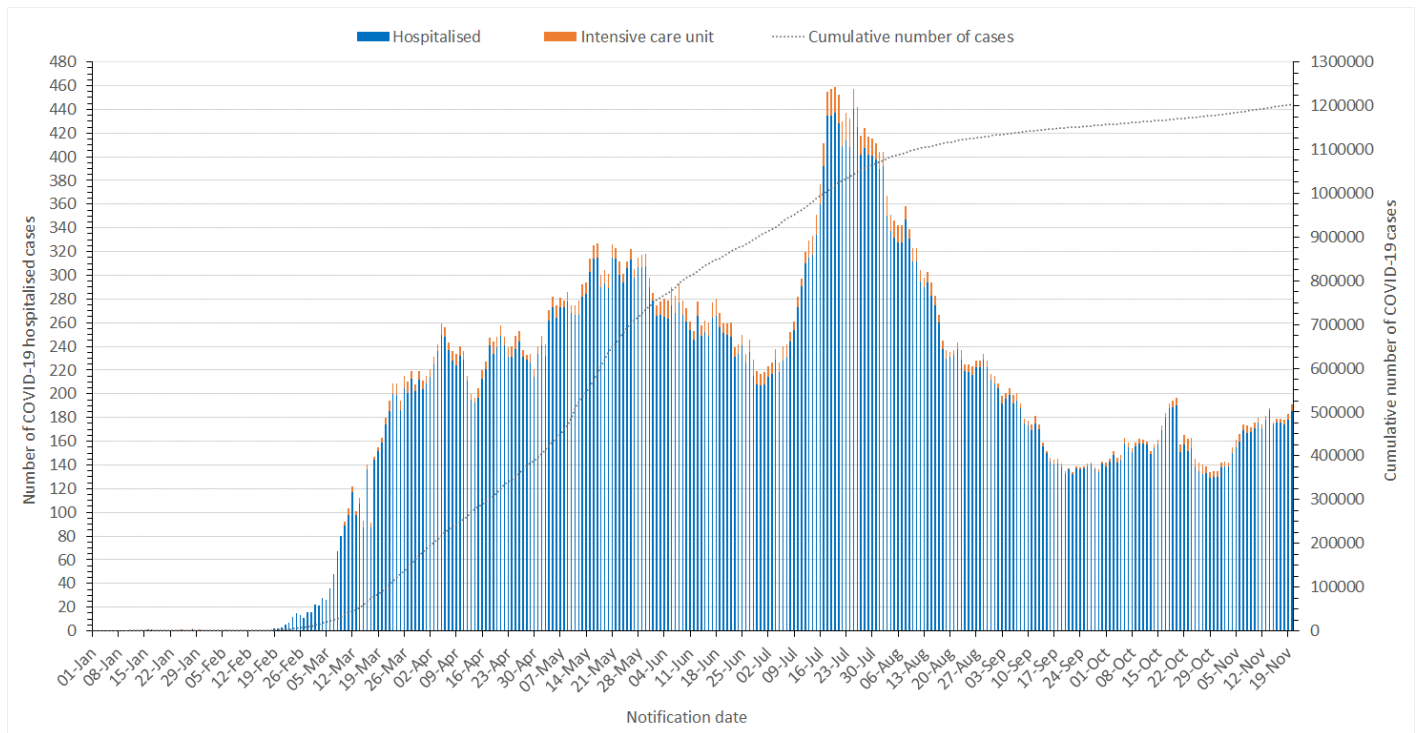
The 7-day average of **hospitalised cases** increased by 4% from 171 in the last reporting week to 178 this week. **Intensive care unit cases** decreased from 4 in the last reporting week to 3 this week. New hospital admissions related to COVID-19 increased by 15% from 65 in the last reporting week to 75 this week, and direct intensive care unit admissions remained unchanged with one this week.

Deaths increased by 56% this reporting week with 14 deaths compared to 9 last week.

There were 207 cases in the **Aboriginal population** during the current reporting week, an 18% increase compared to last week. Case rates in the Aboriginal population are lower compared to the non-Aboriginal population, with the 7-day average rate ratio sitting at 0.54 this reporting week. No deaths were reported in the Aboriginal population this week.

Hospitalisations, intensive care unit inpatients and deaths

Figure 1. Number of active and cleared COVID-19 cases currently in hospital and intensive care unit, and cumulative number of COVID-19 notifications by notification date, 01 January to 20 November 2022.



Notes
 Data sourced from Western Australia Department of Health dataset
 Notification date refers to data collected up to the end of the 24-hour reporting period 8pm to 8pm
 The reporting period transitioned to a 6pm to 6pm cycle from 18th June 2022 and then to a 4pm to 4pm cycle from 24th August 2022
 'Hospitalised' relates to active and cleared COVID-19 cases that are current hospital inpatients. The reason for admission may be unrelated to COVID-19 for some people
 'Intensive care unit' (ICU) is a subset of hospitalised and relates to active/cleared COVID-19 cases that are currently in an ICU
 The definition of COVID-19 related hospitalisation was updated on 21 October 2022 to exclude cases where more than 60 days have passed since their positive COVID-19 test. This new definition more accurately captures cases in whom COVID-19 may have contributed to their reason for ongoing hospitalisation. Data reported after 21 October cannot be compared directly to data recorded prior to that date.

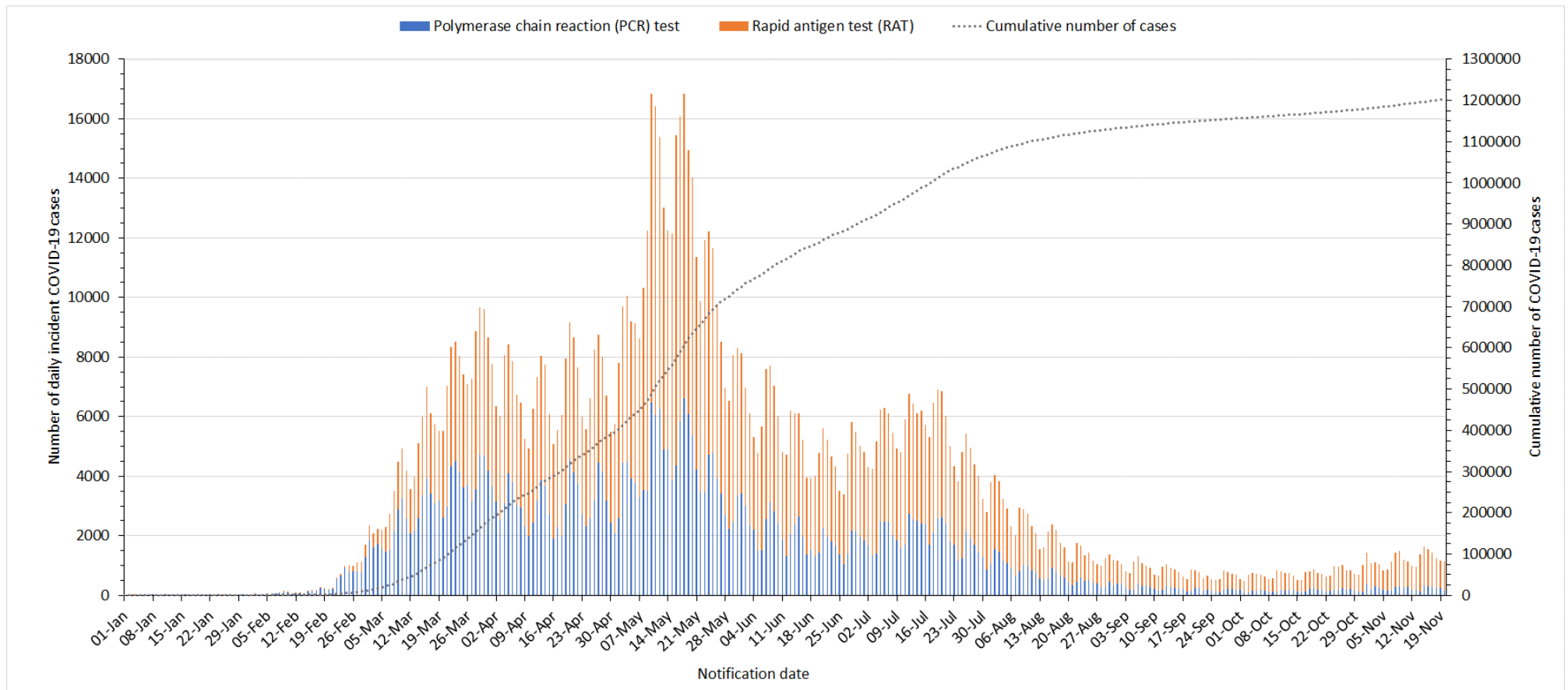
Table 1. Number of COVID-19 related deaths by vaccination status and age group, 14 November to 20 November 2022 and 01 January to 20 November 2022.

| | Week 14 Nov – 20 Nov 2022 | 01 Jan 2022 – 20 Nov 2022 |
|---|----------------------------------|----------------------------------|
| Number of COVID-19 vaccine doses | Deaths (n= 14) | Deaths (n= 728) |
| 0 | 0 (0%) | 139 (19.1%) |
| 1 | 0 (0%) | 27 (3.7%) |
| 2 | 1 (7.1%) | 91 (12.5%) |
| 3+ | 13 (92.9%) | 471 (64.7%) |
| Age group (years) | | |
| 0-9 | 0 (0%) | 0 (0%) |
| 10-19 | 0 (0%) | 2 (0.3%) |
| 20-29 | 0 (0%) | 1 (0.1%) |
| 30-39 | 0 (0%) | 4 (0.5%) |
| 40-49 | 0 (0%) | 9 (1.2%) |
| 50-59 | 0 (0%) | 27 (3.7%) |
| 60-69 | 0 (0%) | 54 (7.4%) |
| 70-79 | 2 (14.3%) | 130 (17.9%) |
| 80-89 | 7 (50.0%) | 277 (38.0%) |
| 90+ | 5 (35.7%) | 224 (30.9%) |

Notes
 Data sourced from Western Australia Department of Health dataset
 Number of vaccination doses sourced from Australian Immunisation Register. Vaccination data are available for WA residents only, therefore, the number of unvaccinated individuals (0 doses) may be overestimated
 A high proportion of the WA population (16 years and above) is fully vaccinated against COVID-19 (as of 19th November 2022 – 84.0% for 3+ doses, >95% for 2 doses), therefore interpretation of people who have died with both 3+ and 2 doses requires consideration within this context.
 Deaths are counted by notification date and may include historical deaths that occurred (i.e. date of death) prior to the current report week
 Notification date refers to data collected up to the end of the 24-hour reporting period 8pm to 8pm
 The reporting period transitioned to a 6pm to 6pm cycle from 18th June 2022 and then to a 4pm to 4pm cycle from 24th August 2022
 1 previously reported death was re-classified as non-COVID-related since most recent surveillance report
 Deaths are not necessarily associated with hospital and/or ICU admissions.

Case data

Figure 2. COVID-19 cases by notification date and test type, Western Australia, 01 January to 20 November 2022.



Notes

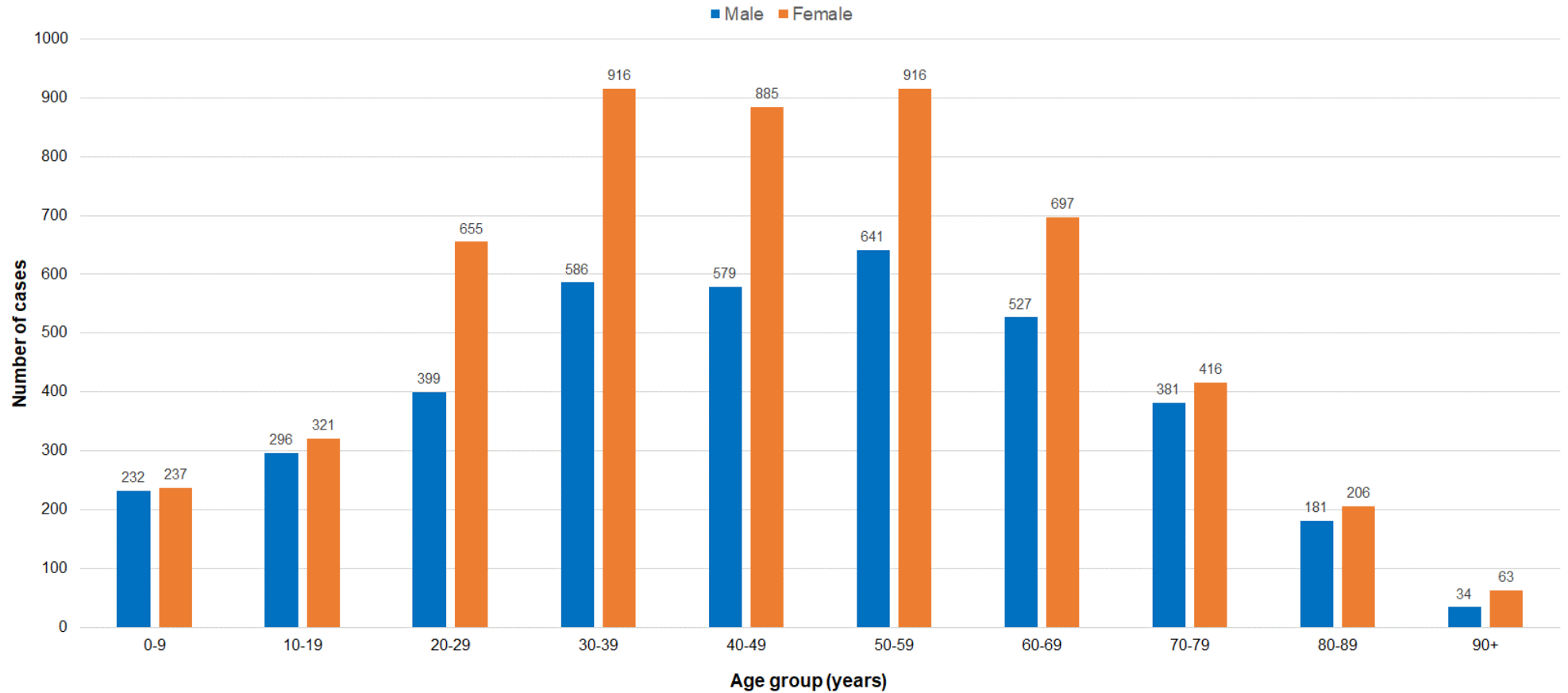
Data sourced from Western Australia Department of Health dataset

Notification date refers to data collected up to the end of the 24-hour reporting period 8pm to 8pm

The reporting period transitioned to a 6pm to 6pm cycle from 18th June 2022 and then to a 4pm to 4pm cycle from 24th August 2022

COVID-19 cases diagnosed on cruise vessels in WA are included in reporting week ending 06th November, resulting in a larger increase in cases than would be expected on current trends. These cases were identified through enhanced surveillance processes and there was no severe disease or deaths associated with these cases.

Figure 3. COVID-19 cases by age group and sex, Western Australia, 14 November to 20 November 2022.



Notes

Data sourced from Western Australia Department of Health dataset

Notification date refers to data collected up to the end of the 24-hour reporting period 8pm to 8pm

The reporting period transitioned to a 6pm to 6pm cycle from 18th June 2022 and then to a 4pm to 4pm cycle from 24th August 2022

Sex data is partially incomplete due to the unavailability of this variable during rapid antigen test registration, resulting in a discrepancy to total case numbers reported for the week.

- Males: n=3,856 (42.1%) Females: n=5,312 (57.9%)
- Median age = 46 years; range: 0 to 102 years

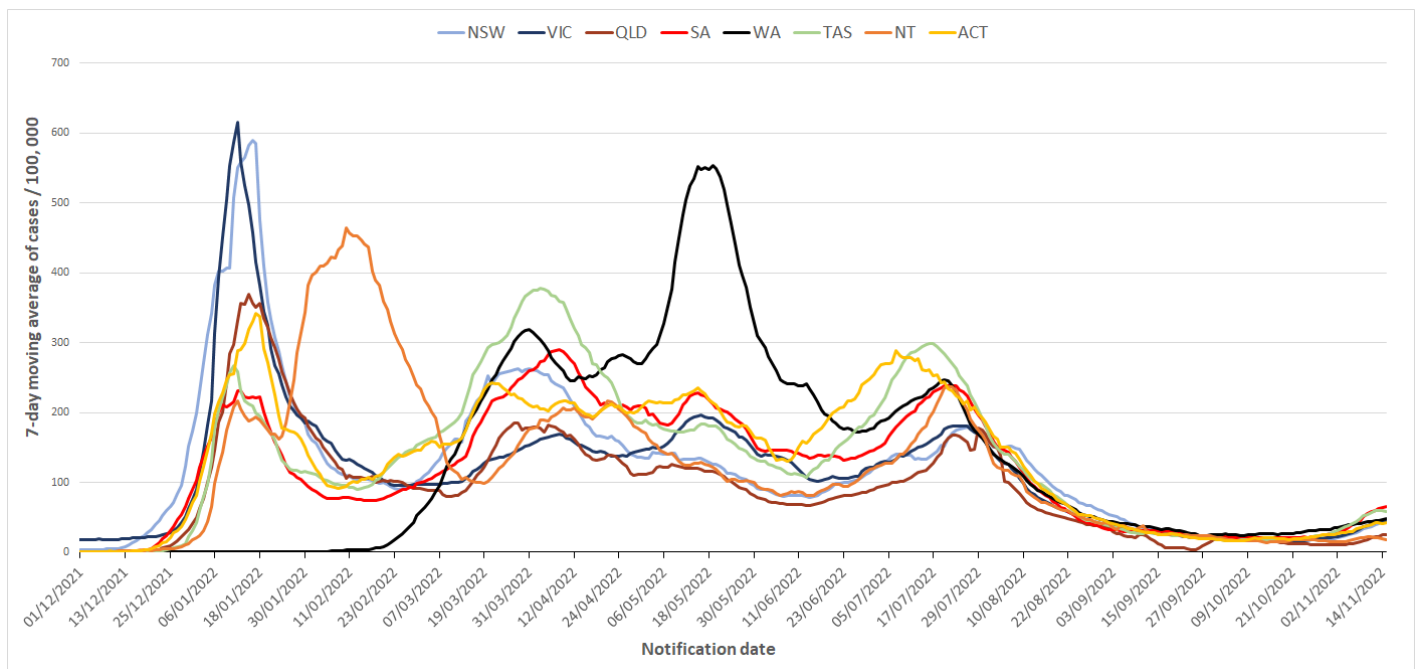
Table 2. COVID-19 reinfections in Western Australia, 02 March to 20 November 2022.

| Month | Number of reinfections * |
|-----------------------------|--------------------------|
| Mar-2022 | 14 |
| Apr-2022 | 28 |
| May-2022 | 105 |
| Jun-2022 | 846 |
| Jul-2022 | 5,040 |
| Aug-2022 | 5,694 |
| Sep-2022 | 4,024 |
| Oct-2022 | 2,967 |
| Nov-2022[^] | 3,476 |
| Total | 22,196 |

* Reinfection definition as per Series of National Guidelines (SoNG) published by the Communicable Disease Network Australia (CDNA): between 2nd March 2022 and 8th July 2022, COVID-19 reinfections were defined as a positive COVID-19 test that occurred more than 12 weeks after an initial infection. From 9 July 2022 to date, COVID-19 reinfections are defined as a positive COVID-19 test occurring 28 days after previously recovering from the virus

[^] Data from 1st November to 20th November inclusive

Figure 4. 7-day moving average of COVID-19 cases per 100,000 population by Australian jurisdiction, 01 December 2021 to 15 November 2022.



Notes

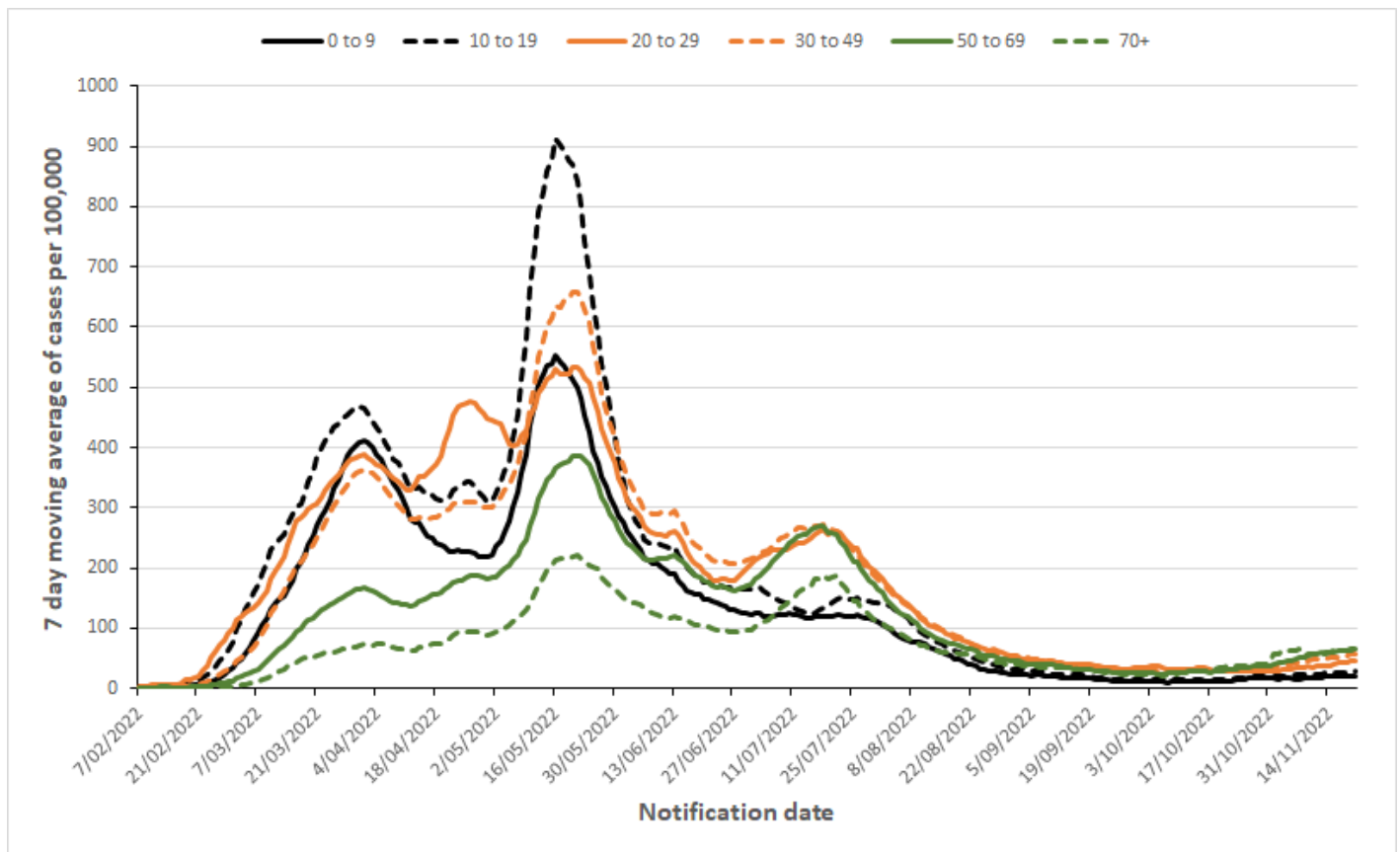
Data sourced from the respective jurisdictional health department datasets

Notification date refers to data collected up to the end of the 24-hour reporting period 8pm to 8pm

The reporting period in WA transitioned to a 6pm to 6pm cycle from 18th June 2022 and then to a 4pm to 4pm cycle from 24th August 2022

Population denominators are sourced from Australian Bureau of Statistics December 2021 estimates.

Figure 5. 7-day moving average of COVID-19 cases per 100,000 by age group, Western Australia, 08 February to 20 November 2022.



Notes

Data sourced from Western Australia Department of Health dataset

Notification date refers to data collected up to the end of the 24-hour reporting period 8pm to 8pm

The reporting period transitioned to a 6pm to 6pm cycle from 18th June 2022 and then to a 4pm to 4pm cycle from 24th August 2022

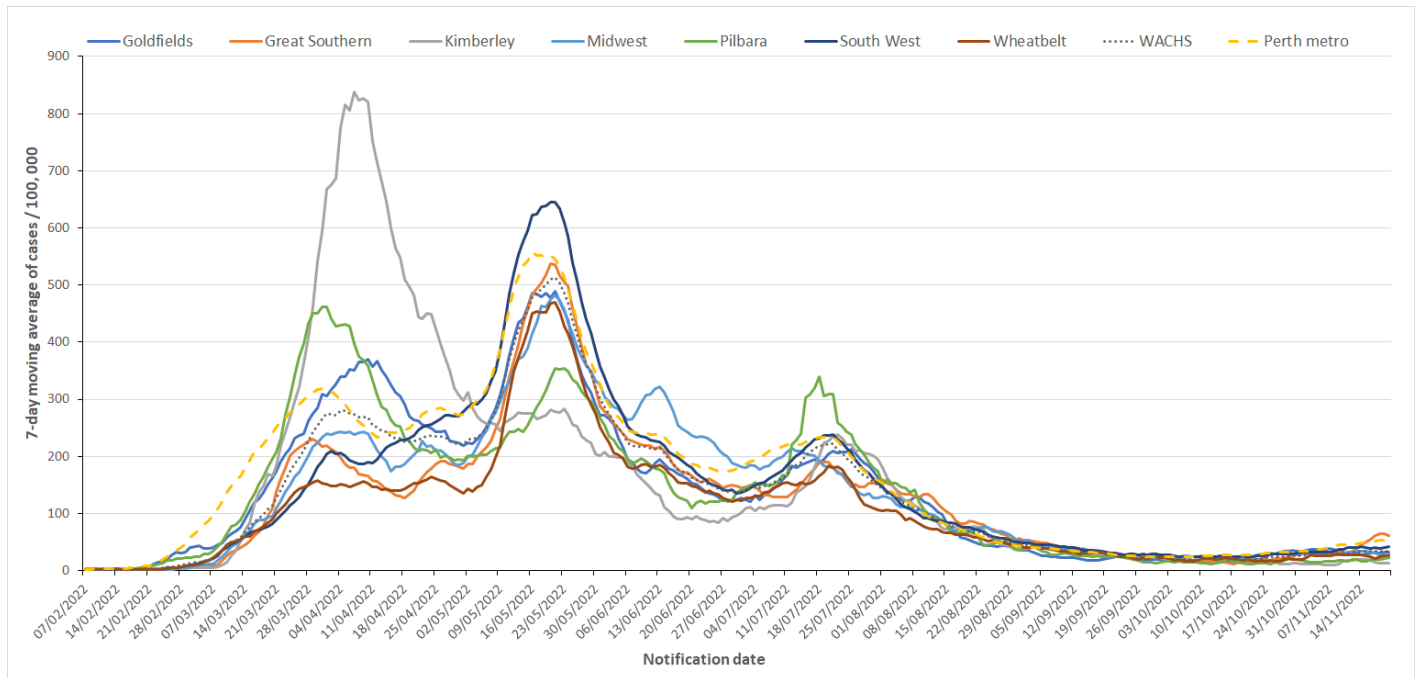
Cases include cases whose source of infection is classified as 'locally-acquired', 'interstate-acquired', 'overseas-acquired' and 'source under investigation'

Case data includes those determined by both polymerase chain reaction (PCR) tests and rapid antigen tests (RAT)

COVID-19 cases diagnosed onboard cruise vessels in WA are included in reporting week ending 06th November, resulting in a larger increase in cases than would be expected on current trends. These cases were identified through enhanced surveillance processes and there was no severe disease or deaths associated with these cases.

Population denominator sourced from Australian Bureau of Statistics June 2021 estimates.

Figure 6. 7-day moving average of COVID-19 cases per 100,000 population by health region, Western Australia, 08 February 2022 to 20 November 2022.



Notes

Data sourced from Western Australia Department of Health dataset
 Notification date refers to data collected up to the end of the 24-hour reporting period 8pm to 8pm
 The reporting period transitioned to a 6pm to 6pm cycle from 18th June 2022 and then to a 4pm to 4pm cycle from 24th August 2022
 Cases include cases whose source of infection is classified as 'locally-acquired', 'interstate-acquired', 'overseas-acquired' and 'source under investigation'
 Case data is by place of usual residence for positive case (due to unavailability of data for specific location of acquisition)
 Case data includes those determined by both polymerase chain reaction (PCR) tests and rapid antigen tests (RAT)
 Western Australia Country Health Service (WACHS) includes Goldfields, Great Southern, Kimberley, Midwest, Pilbara, South West and Wheatbelt health regions combined
 Perth metropolitan region includes East Metropolitan Health Service, North Metropolitan Health Service and South Metropolitan Health Service combined
 Population denominator sourced from Australian Bureau of Statistics 2020 estimates.

Table 3. Number of COVID-19 cases and case rates per 100,000 population by region, 14 November to 20 November 2022 and 07 November to 13 November 2022.

| | Region | Week 14 November to 20 November 2022 | | Week 07 November to 13 November 2022 | |
|---------------------------|-----------------------|--------------------------------------|--|--------------------------------------|---|
| | | Number for current week | Rates for current week (cases/100,000 pop) | Number for previous week | Rates for previous week (cases/100,000 pop) |
| WACHS Regions | Goldfields | 124 | 230 | 120 | 222 |
| | Great Southern | 263 | 429 | 167 | 272 |
| | Kimberley | 35 | 97 | 48 | 133 |
| | Midwest | 107 | 172 | 151 | 243 |
| | Pilbara | 92 | 146 | 76 | 121 |
| | South West | 533 | 293 | 522 | 287 |
| | Wheatbelt | 147 | 193 | 146 | 192 |
| WACHS total* | | 1,301 | 244 | 1,230 | 230 |
| Other** | | 82 | - | 69 | - |
| Perth Metropolitan | | 8,107 | 381 | 7,080 | 332 |
| Total | | 9,490 | 356 | 8,379 | 315 |

Notes

Data sourced from Western Australia Department of Health dataset

Notification date refers to data collected up to the end of the 24-hour reporting period 8pm to 8pm

The reporting period transitioned to a 6pm to 6pm cycle from 18th June 2022 and then to a 4pm to 4pm cycle from 24th August 2022

Cases include all cases whose source of infection is classified as 'locally acquired', 'interstate acquired', 'overseas acquired' and 'source under investigation'

Case data is by place of usual residence for positive case (due to unavailability of data for specific location of acquisition)

Case data includes COVID-19 cases diagnosed by either polymerase chain reaction (PCR) tests and/or rapid antigen tests (RAT)

*Western Australia Country Health Service (WACHS) includes Goldfields, Great Southern, Kimberley, Midwest, Pilbara, South West and Wheatbelt public health regions combined

Total excludes WACHS*

Perth Metropolitan region includes East Metropolitan Health Service, North Metropolitan Health Service and South Metropolitan Health Service combined

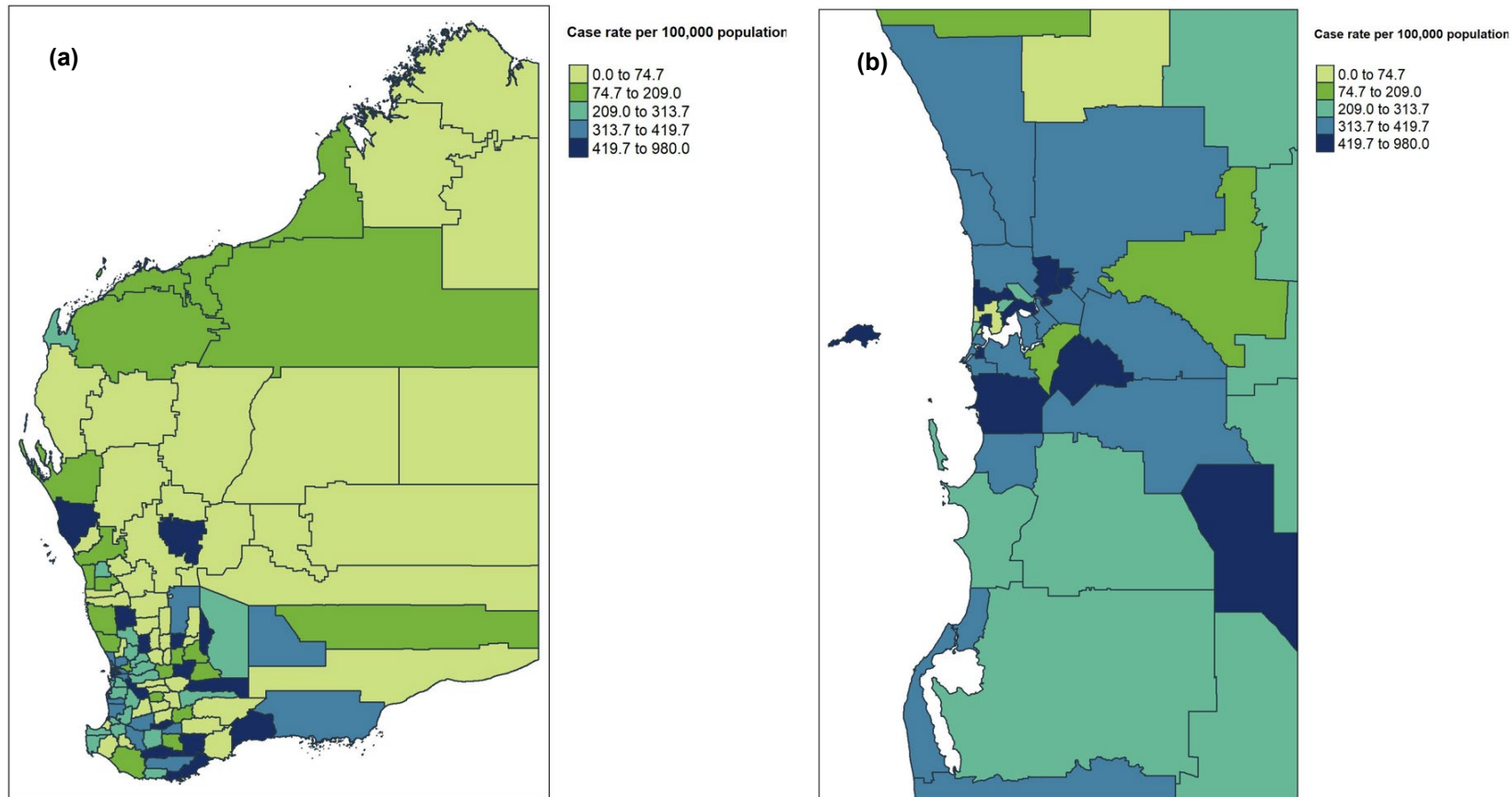
**Other includes cases with overseas and interstate residential addresses, and cases without residential address information

COVID-19 cases diagnosed onboard cruise vessels in WA are included in reporting week ending 06th November, resulting in a larger increase in cases than would be expected on current trends. These cases were identified through enhanced surveillance processes and there was no severe disease or deaths associated with these cases

Population denominator is sourced from Australian Bureau of Statistics 2020 estimates.

Figure 7 (a). Locally acquired COVID-19 weekly case rates per 100,000 population by LGA, regional Western Australia, 14 November to 20 November 2022.

(b) Locally acquired COVID-19 weekly case rates per 100,000 population by LGA, Perth metropolitan area, 14 November to 20 November 2022.



Notes

Data sourced from Western Australia Department of Health dataset

Notification date refers to data collected up to the end of the 24-hour reporting period 8pm to 8pm

The reporting period transitioned to a 6pm to 6pm cycle from 18th June 2022 and then to a 4pm to 4pm cycle from 24th August 2022

'Locally acquired' cases refers to cases where source of infection is classified as 'locally acquired' and 'source is under investigation' only (excludes interstate and overseas-acquired cases)

Cases are represented on the map according to their place of usual residence (no information for specific location of acquisition)

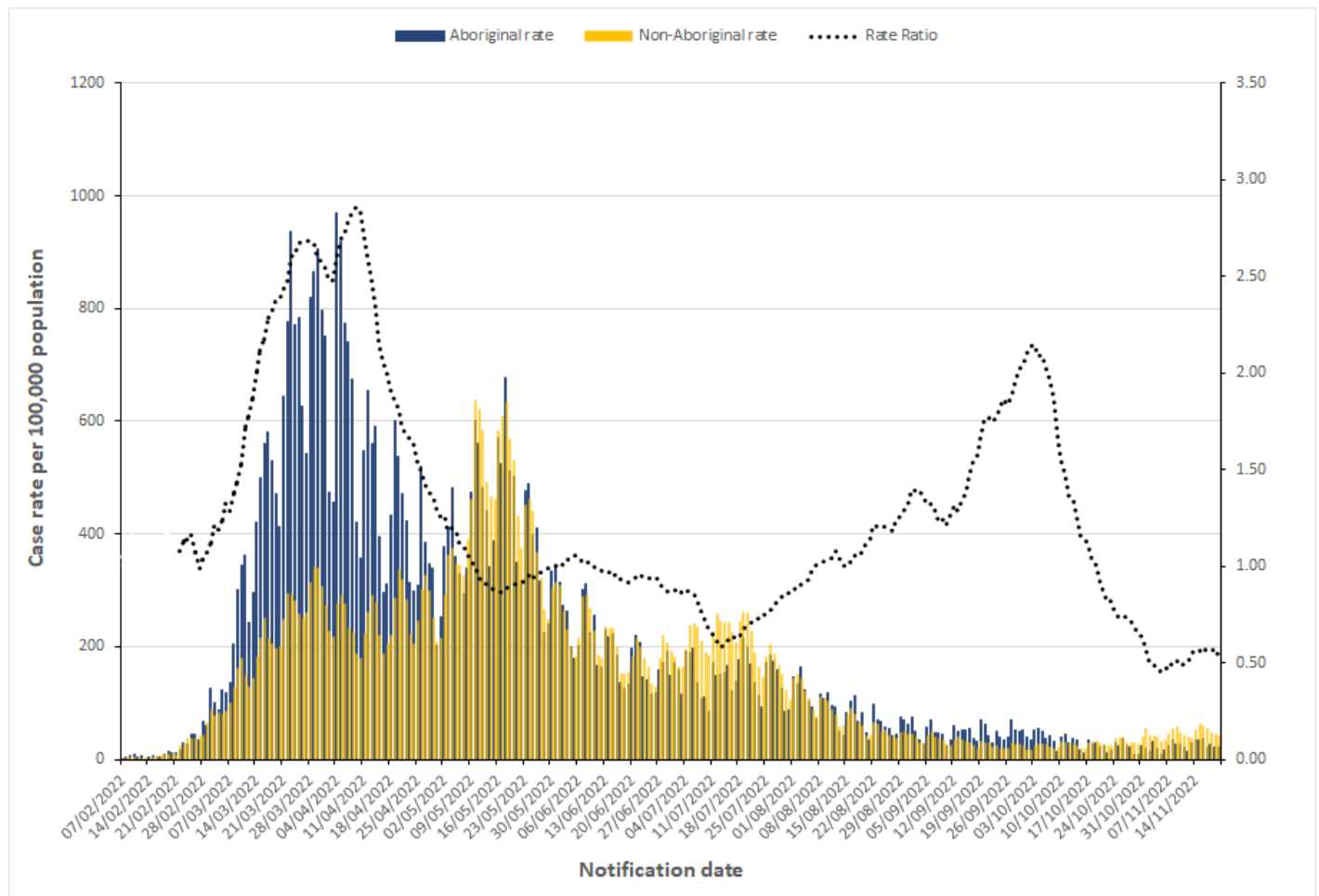
Cases include those detected by either polymerase chain reaction (PCR) tests or rapid antigen tests (RAT)

Areas on the map are defined by Local Government Area (LGA) boundaries

Population denominator is sourced from Australian Bureau of Statistics 2020 estimates.

Aboriginal case summary

Figure 8. COVID-19 cases in Western Australia per 100,000 population and rate ratio by Indigenous status and notification date, 08 February to 20 November 2022.



Notes

Data sourced from Western Australia Department of Health dataset

Notification date refers to data collected up to the end of the 24-hour reporting period 8pm to 8pm

The reporting period transitioned to a 6pm to 6pm cycle from 18th June 2022 and then to a 4pm to 4pm cycle from 24th August 2022

Indigenous status is defined as those who identify as 'Aboriginal and Torres Strait Islander (TSI) origin'/'Aboriginal but not TSI origin'/'TSI but not Aboriginal origin'

Cases where Indigenous status was not stated were designated as non-Indigenous

Cases include those detected by both polymerase chain reaction (PCR) tests and rapid antigen tests (RAT)

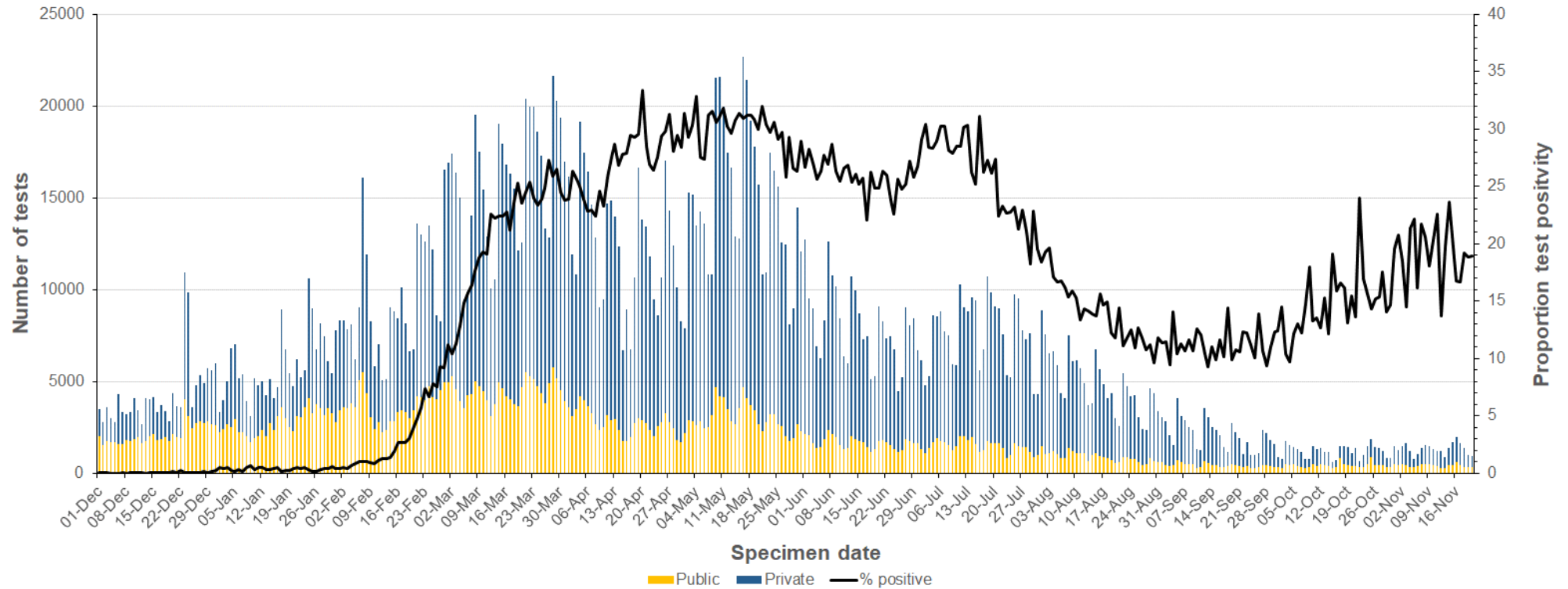
Population denominator data were sourced from Australian Bureau of Statistics 2020 estimates

Rate ratio is calculated by dividing the Indigenous rate by the non-Indigenous rate, with a 7-day average of the respective rate ratios applied to smooth the trend

Rate ratio is only plotted from 22nd February 2022 as prior to this, case numbers were too low.

Testing data

Figure 9. The number of COVID-19 polymerase chain reaction tests and proportion positive by laboratory category and specimen date, 01 December 2021 to 20 November 2022.



Notes

Data sourced from Western Australian public and private pathology laboratories

Specimen date refers to the date that specimen was collected

Number of tests includes both positive and negative tests.

From 01 October, testing at private pathology providers require a referral from a GP

Appendix 1

Regional cases by postcode, 14 November – 20 November 2022

| WACHS Regions | Postcode | Week 14 Nov to 20 Nov 2022 | WACHS Regions | Postcode | Week 14 Nov to 20 Nov 2022 | WACHS Regions | Postcode | Week 14 Nov to 20 Nov 2022 |
|----------------|----------|----------------------------|---------------------|----------|----------------------------|------------------------|----------|----------------------------|
| Goldfields | 6346 | <5 | Midwest (continued) | 6537 | <5 | South West (continued) | 6254 | <5 |
| | 6429 | 8 | | 6573 | <5 | | 6255 | 6 |
| | 6430 | 54 | | 6630 | <5 | | 6258 | 11 |
| | 6432 | 9 | | 6638 | <5 | | 6260 | <5 |
| | 6437 | <5 | | 6701 | <5 | | 6271 | 10 |
| | 6442 | 5 | | 6707 | 6 | | 6280 | 62 |
| | 6448 | <5 | Pilbara | 6710 | <5 | | 6281 | 41 |
| | 6450 | 41 | | 6712 | <5 | | 6282 | 6 |
| | 6452 | <5 | | 6713 | <5 | | 6284 | <5 |
| Great Southern | 6316 | <5 | | 6714 | 33 | 6285 | 33 | |
| | 6317 | 13 | | 6716 | <5 | 6286 | <5 | |
| | 6318 | <5 | 6720 | <5 | 6290 | 8 | | |
| | 6320 | <5 | 6721 | 10 | 6398 | 7 | | |
| | 6321 | <5 | 6722 | 13 | Wheatbelt | 6041 | <5 | |
| | 6322 | <5 | 6751 | 9 | | 6043 | <5 | |
| | 6323 | <5 | 6753 | 10 | | 6044 | <5 | |
| | 6324 | 20 | 6754 | <5 | | 6302 | 11 | |
| | 6330 | 184 | 6758 | <5 | | 6304 | 5 | |
| | 6333 | 14 | 6762 | <5 | | 6308 | <5 | |
| | 6335 | 5 | South West | 6217 | | <5 | 6311 | <5 |
| | 6336 | <5 | | 6218 | | <5 | 6312 | <5 |
| | 6337 | 5 | | 6220 | | 14 | 6315 | <5 |
| | 6338 | <5 | | 6221 | | <5 | 6350 | <5 |
| | 6348 | <5 | | 6224 | <5 | 6358 | <5 | |
| 6395 | 6 | 6225 | | 23 | 6359 | <5 | | |
| 6396 | <5 | 6226 | | <5 | 6365 | <5 | | |
| Kimberley | 6725 | 17 | | 6227 | <5 | 6369 | <5 | |
| | 6726 | 9 | | 6230 | 141 | 6383 | <5 | |
| | 6728 | <5 | | 6232 | 36 | 6390 | <5 | |
| | 6743 | <5 | 6233 | 86 | 6391 | <5 | | |
| Midwest | 6519 | <5 | 6236 | 5 | 6401 | 18 | | |
| | 6522 | <5 | 6237 | <5 | 6405 | <5 | | |
| | 6525 | <5 | 6238 | <5 | 6411 | <5 | | |
| | 6530 | 63 | 6239 | 13 | 6415 | 5 | | |
| | 6532 | 7 | 6240 | <5 | 6418 | 6 | | |
| | 6535 | <5 | 6244 | <5 | 6423 | <5 | | |
| | 6536 | 13 | 6253 | 5 | 6426 | <5 | | |

| WACHS Regions | Postcode | Week 14 Nov to 20 Nov 2022 | WACHS Regions | Postcode | Week 14 Nov to 20 Nov 2022 | WACHS Regions | Postcode | Week 14 Nov to 20 Nov 2022 |
|-----------------------|----------|----------------------------|-----------------------|----------|----------------------------|---------------|----------|----------------------------|
| Wheatbelt (continued) | 6460 | 6 | Wheatbelt (continued) | 6566 | 11 | | | |
| | 6461 | <5 | | 6572 | <5 | | | |
| | 6477 | <5 | | 6603 | <5 | | | |
| | 6489 | <5 | | | | | | |
| | 6501 | <5 | | | | | | |
| | 6502 | <5 | | | | | | |
| | 6503 | <5 | | | | | | |
| | 6507 | <5 | | | | | | |
| | 6510 | 12 | | | | | | |
| | 6511 | <5 | | | | | | |
| | 6512 | <5 | | | | | | |
| | 6516 | <5 | | | | | | |
| | 6560 | 7 | | | | | | |
| | 6562 | <5 | | | | | | |

Notes

Data sourced from Western Australia Department of Health dataset

Exact number of cases less than 5 not reported for confidentiality

Notification date refers to data collected up to the end of the 24-hour reporting period 8pm to 8pm

The reporting period transitioned to a 6pm to 6pm cycle from 18th June 2022 and then to a 4pm to 4pm cycle from 24th August 2022

Cases include all cases whose source of infection is classified as 'locally acquired', 'interstate acquired', 'overseas acquired' and 'source under investigation'

Case data is based on the residential postcode of each case. The case may have an isolation address based in another regional postcode.

Case data includes those determined by both polymerase chain reaction (PCR) tests and rapid antigen tests (RAT)

*Western Australia Country Health Service (WACHS) includes Goldfields, Great Southern, Kimberley, Midwest, Pilbara, South West and Wheatbelt public health regions

This document can be made available in alternative formats on request for a person with disability.

© Department of Health 2022

Copyright to this material is vested in the State of Western Australia unless otherwise indicated. Apart from any fair dealing for the purposes of private study, research, criticism or review, as permitted under the provisions of the *Copyright Act 1968*, no part may be reproduced or re-used for any purposes whatsoever without written permission of the State of Western Australia.

health.wa.gov.au